

Alert Beacon by Alertus

The Alertus®, Alert Beacons are designed to serve campuses, bases, and other large facilities that do not have an in-building emergency notification system and/or cannot use a retrofit unit because the current conventional voice public address system does not integrate with the building's fire alarm system. The latest standards from the National Fire Protection Association (NFPA 72-2010) point to the fact that there is no substitute for in-building emergency notification, with its reliability, localization, and intelligibility. Alert Beacons are specifically highlighted in the NFPA 72 Handbook on Emergency Communications Systems (Chapter 24) as an effective in-building alerting solution.

The wall-mounted Alert Beacons (controlled by Alertus Activation Software or 3rd party distributed recipient systems) flash and sound to capture the attention of the building occupants at a 10-15 ft. distance, and simultaneously display a custom message from the public safety/security describing the emergency and the appropriate response. The strobes and sounder provide greater coverage for a wider area than the speakers to signal attention. Also, the integrated text LCD offers message intelligibility magnitudes that are higher than voice evacuation due to the elimination of acoustical disturbances. Alert Beacons are mounted in prominent locations throughout the facility footprint and can be served by PoE enabled Ethernet and three reliable wireless communication paths.

To activate the beacons using the Alertus Activation software, refer to the following steps.

1. Customize or choose a pre-scripted message.
2. Select the dissemination area.
3. Designate the audible and the visual signaling attributes and duration.

Alert Beacons may also be activated via several third-party Distributed Recipient Mass Notification software systems. An optional ThreatWatcher feature monitors the local and the national sources to dispatch automated alerts to Alert Beacons that automatically warn of impending weather or major emergencies. Moreover, since the Alert Beacon is wall-mounted, the Alert Beacons can be placed in high visibility areas, such as entrances, lobbies, main corridors, at administrative desks, and near elevators and stairways.



Alert Beacon Installed in an Outdoor Enclosure and an Alert Beacon Wireguard



Alert Beacon

Features

- Communicates by Ethernet/PoE, WiFi, FM Radio, or RF Paging
- Activates via a 3rd party DRMNS software and the Alertus Activation Software
- Contains a large backlit LCD, viewable from 10-15 feet
- Complies with ADA Standards
- Produces high intensity strobes with 8 flash patterns
- Signals an on-board 106 db sounder with 8 tones patterns
- Uses an automatically rechargeable battery backup
- Transmits a low voltage operation
- Dispatches digital signage and TV override
- Delivers a text-to-speech interface into FACP/PA
- Includes configurable buttons for optional functions
- Installs as a flush wall-mount, with an optional surface mount
- Offers an optional desktop stand
- Provides an available wire guard used to protect against theft, vandalism, or accidental damage
- Connects the control door lock systems and other building systems with I/O ports
- Alertus desktop notification extension available
- Desktop alert notification extension available
- Panic buttons available

Compatible Control Panels

- IFP-2000/ECS
- IFP-50
- IFP-1000/ECS
- IFP-100/ECS
- IFP-25

P/N 351205 Rev A

Copyright © 2016 Honeywell International Inc.

Specifications

Input Power: 12-24 volts AC or DC; Power-over-Ethernet (PoE) standard

Backup Power: Six (6) rechargeable AA-batteries

Dimensions: 7" H x 8" W x 1 3/4" D (17.8 H x 20.3 W x 4.4 D cm)

Weight: 1 3/4 lbs.

Installation: Flush-mounts in double-gang electrical box (optional surface bracket)

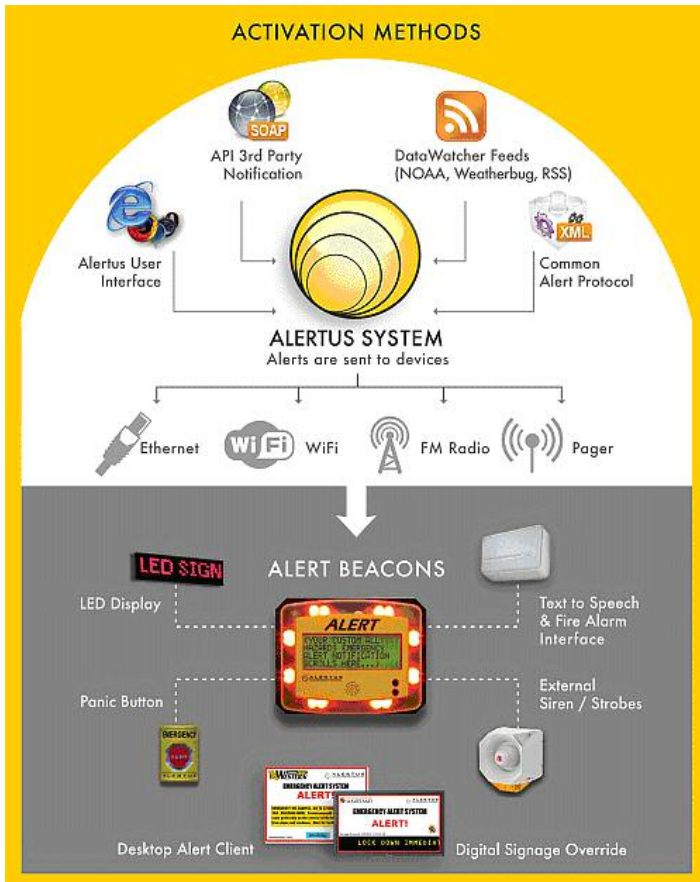
LCD Screen: Backlit LCD - 4 lines x 20 characters, viewable from a distance of 10-15 ft

LED Strobes: 32 high intensity LED flashing strobe lights

Sounder: On-board, 8-tone siren rated at 106 dB

Ordering Information

Part Number	Description
AAB-E	Alertus Beacon - Ethernet/PoE
AAB-F	Alertus Beacon - Ethernet/PoE with FM Radio
AAB-P	Alertus Beacon - Ethernet/PoE with Paging
AAB-W	Alertus Beacon - Ethernet/PoE with WiFi (802.11)
AAB-MBS	Alertus Beacon - Mounting Bracket - Surface (deep profile)
AAB-OE	Alertus Beacon - Outdoor Enclosure
AAB-WGC	Alertus Beacon - Wireguard Cage
AAB-PSA	Alertus Beacon - AC power supply
AAB-PSD	Alertus Beacon -DC power supply



Alertus Activation Console



This document is not intended to be used for installation purposes. We try to keep our product information up-to-date and accurate. We cannot cover all specific applications or anticipate all requirements. All specifications are subject to change without notice. For more information, contact Silent Knight 12 Clintonville Road, Northford, CT 06472-1610 Phone: (800) 328-0103, Fax: (203) 484-7118. www.farenhyt.com