

## Activation Software by Alertus

The Alertus® Activation Software is an easy-to-use frontend control software that is programmed to dispatch emergency evacuation message notifications to the following:

- Alert Beacons
- LED marquees
- Text-to-speech (TTS) interfaces to the following:
  - public address (PA) speakers
  - outdoor giant voice
  - fire alarm audio
- Computer desktop alerting
- Digital signage & cable TV override

The interface access uses a web browser format so that you can easily navigate the webpage. This web browser format provides access to the software without requiring an internet connection.

### Activate Notification

Use the Activation Software Main Menu to access the configuration settings and create reports for authorized system administrators rather than rely on dispatchers. Alerts can be dispatched rapidly using any of the following methods:

- Emergency Alert Dispatch
- Preplanned Scenario Alert Dispatch
- Customized Alert Dispatch

### Control Notification Delivery

The User can program Alerts to send emergency notification messages in the following ways:

- Transmit to all emergency endpoint devices in a geographic region using an interactive map interface. OR
- Send a logical subset of devices using predefined groups categorized by the type of emergency and/or the location.

### Confirm Notification Delivery

You can use the Activation Software to verify the status of the individual Alertus Desktop workstations and determine how many clients successfully activated or acknowledged an alert in real-time.

### Push Notification to Computer Screens

The Alertus Desktop Alert software transforms your organization's computers so that users can have access to a variety of emergency notification dispatch options. This software is seamlessly integrated with other endpoints of the Alertus System and is interoperable with most 3rd party Distributed Recipient Mass Notification (DRMNS) Systems. You can program the Alertus Desktop Notification software to quickly disseminate emergency notification messages in a secure and reliable way to networked computers.

### Easy-to-Install and Configure

Alert text, logos, and context menu text can be tailored to suit your organization's needs.



**Alertus Main Menu**

## Features

The Alertus System can disseminate alerts to the following endpoints:

- Multicast to VoIP
- Alert Beacons and connected peripherals such as panic buttons and the overhead LED marquees
- Voice Public Address, Fire Alarm Audio systems, or Giant Voice
- Digital Signage or Cable TV
- Desktop Alert Software

The Alertus System can be activated from a variety of sources including:

- The Alertus Activation Console
- Third Party Mass Notification Software Services
- Common Alert Protocol (CAP) 1.1 Alert Messages
- Automated Alert Feeds

To dispatch alerts, do the following three easy steps:

1. Select a pre-scripted message or customize an unscripted message
2. Select the destination area (an optional Geospatial Information Systems (GIS) map view is available)
3. Designate the audible, the visual signaling attributes and the duration

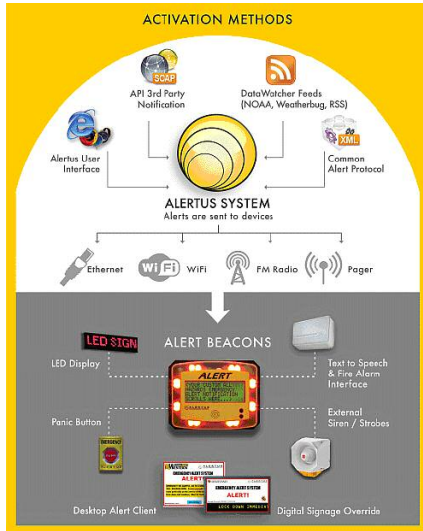
## Compatible Control Panels

- IFP-2000/ECS
- IFP-50
- IFP-1000/ECS
- IFP-100/ECS
- IFP-25

## Easy-to-Install and Configure (Continued)

To simplify the installation, the Alertus Desktop is compatible with the Desktop Management Software. This feature allows the IT Department to use the Alertus automated software installation package to download and configure software to several client workstations simultaneously.

## System Overview



**Alertus Activation Console**



**Optional GIS Map Interface**

## Alertus Customized Alert Dispatch

### Customized Alert Dispatch

- Prepare a customized alert for delivery by specifying the NOTIFICATION TEXT, RECIPIENTS, ALERT PROFILE, and ALERT DURATION.
- The NOTIFICATION TEXT can be entered manually, or selected from any of the prescribed messages included in the drop-down menu below and modified if desired.
  - The RECIPIENTS can include a combination of Groups, a combination of Alert Beacons, or ALL beacons and associated devices.
  - The ALERT PROFILE may be chosen from one of the preconfigured [Alert Profiles](#) or customized for this alert.
  - The ALERT DURATION specifies the amount of time the alert will remain in the system, and can be set to any number of whole minutes, hours, days, or weeks.
  - Click "Continue" to go to the confirmation page where you can verify and dispatch the alert.

Prescribed Message: [?] Custom Text

Notification Text: **EMERGENCY ON-CAMPUS. GO TO A SECURE LOCATION IN THIS BUILDING NOW. Protect yourself within a locked room preferably on the interior of the building away from doors and windows. Wait for further instructions.**

210 characters

Recipients: [?] Standard Mode Unit Mode

ALL

Academic Buildings

North Campus

Residence Halls

South Campus

test

Alert Duration: [?] 10 minutes

Use Settings from Alert Profile: [?] EMERGENCY

Custom Alert Settings: (Click to show/hide)

[Continue](#)

**Web-Paged Dispatch Screen**

## Ordering Information

Part Number	Description
AASW	Alertus Activation Software: Includes server software and end-user software
AASE	Alertus Activation Software for Large Enterprise: Includes server software and end-user software. Required for multi-campus, wide area network connections
ADP-S	Alertus Desktop Popup Notification Software Add-On: Desktop Alert Notification on individual computers
ASO-SU	Alertus Digital Signage Override Software Add-On: Alert notification over Digital Signage and Cable TV interrupt
NCCSB-SE	Network Command & Control Software Bundle for Small Enterprise: Supports up to 2500 desktops, unlimited Digital Signage and unlimited Cable TV interrupt
NCCSB-MED	Network Command & Control Software Bundle for Medium Enterprise: Supports up to 5000 desktops, unlimited Digital Signage and unlimited Cable TV interrupt
NCCSB-LG	Network Command & Control Software Bundle Large Enterprise: Supports unlimited desktops, unlimited Digital Signage and unlimited Cable TV interrupt



This document is not intended to be used for installation purposes. We try to keep our product information up-to-date and accurate. We cannot cover all specific applications or anticipate all requirements. All specifications are subject to change without notice. For more information, contact Silent Knight 12 Clintonville Road, Northford, CT 06472-1610 Phone: (800) 328-0103, Fax: (203) 484-7118. [www.farenhyt.com](http://www.farenhyt.com)