



Intelligent 50 Watt Internal Amplifier

ECS-INT50W

The ECS-INT50W is capable of producing 50 watts of audio power on one speaker circuit. It is designed to conveniently mount in the IFP-2000ECS, IFP-1000ECS or IFP-100ECS cabinet, making it an ideal solution for small voice evacuation installations.

The ECS-INT50W is powered and supervised from the IFP-2000ECS, IFP-1000ECS or IFP-100ECS, eliminating the need for an additional AC source and battery backup.

Features

- SBUS addressable
- 50 watts of supervised audio power
- One speaker circuit
- 25 volt or 70.7 volt operation
- UL 864 and UL 2572
- Easy to install assembly in the IFP-2000ECS, IFP-1000ECS or IFP-100ECS cabinet
- Six-wire connection to the ECS system:
 - Two-wires for the Voice BUS
 - Two-wires for the SBUS
 - Two-wires for the 24 VDC power source from a NAC circuit on the IFP-2000ECS, IFP-1000ECS or IFP-100ECS programmed for constant auxiliary power
- UL listed for 520Hz signaling when used with compatible System Sensor speakers. See the ECS-INT50W installation sheet for list of compatible speakers

Listings

Meets the requirements for NFPA 72 Local Protective Signaling Systems & Emergency Communication Systems.

UL 864 and UL 2572

Other Listings: CSFM (pending)

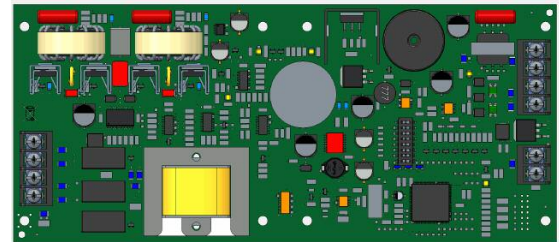
Agency Listings



SIGNALING



Pending



ECS-INT50W

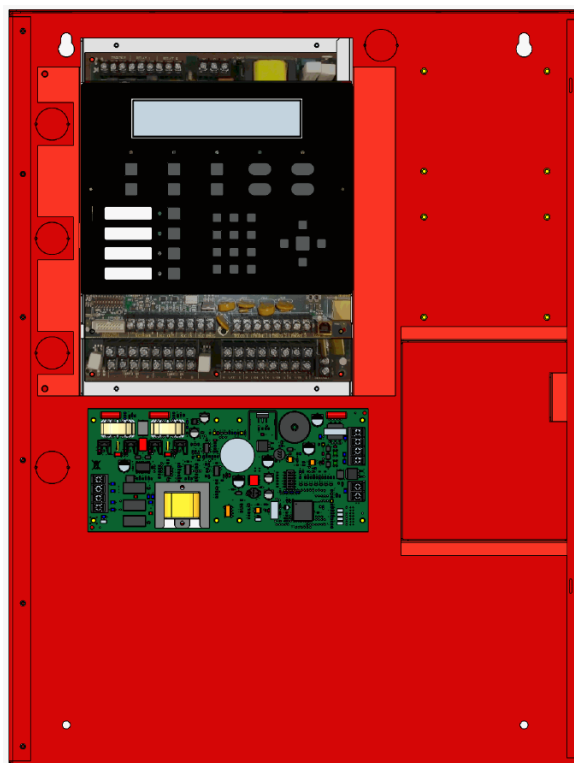
Installation

The ECS-INT50W mounts in the IFP-2000ECS, IFP-1000ECS or IFP-100ECS cabinet.

Compatibility

The ECS-INT50W is compatible with the following voice evacuation components:

- IFP-100ECS Emergency Communication System with Fire Alarm Control Panel
- IFP-1000ECS Emergency Communication System with Fire Alarm Control Panel
- IFP-2000ECS Emergency Communication System with Fire Alarm Control Panel



ECS-INT50W installed in IFP-2000 Cabinet

Specifications

Electrical

Power: 24 VDC

Standby Current: 52 mA

Alarm Current (ECS-INT50W only):

275 mA @ 25V

310 mA @ 70.7V

Full Alarm load current:

2.84 A @ 25V

2.9 A @ 70.7V

Total Power:

50 Watts @ 25 Vrms or 70.7 Vrms

SBUS Standby and Alarm: 10 mA

Wiring: Six conductors – Two Voice Bus, four SBUS

Environmental

Operating Temperature: 32°F – 120°F (0°C – 49°C)

Humidity: 10% – 93% non-condensing

Ordering Information

ECS-INT50W Intelligent 50 Watt Internal Amplifier



**SILENT
KNIGHT**

by Honeywell

This document is not intended to be used for installation purposes. We try to keep our product information up-to-date and accurate. We cannot cover all specific applications or anticipate all requirements. All specifications are subject to change without notice. For more information, contact Silent Knight 12 Clintonville Road, Northford, CT 06472-1610 Phone: (800) 328-0103, Fax: (203) 484-7118. For Technical Support, Please call 800-446-6444. www.farenhyt.com



Assembled in U.S.A.